

PARTS LIST

MODEL
405627x51A

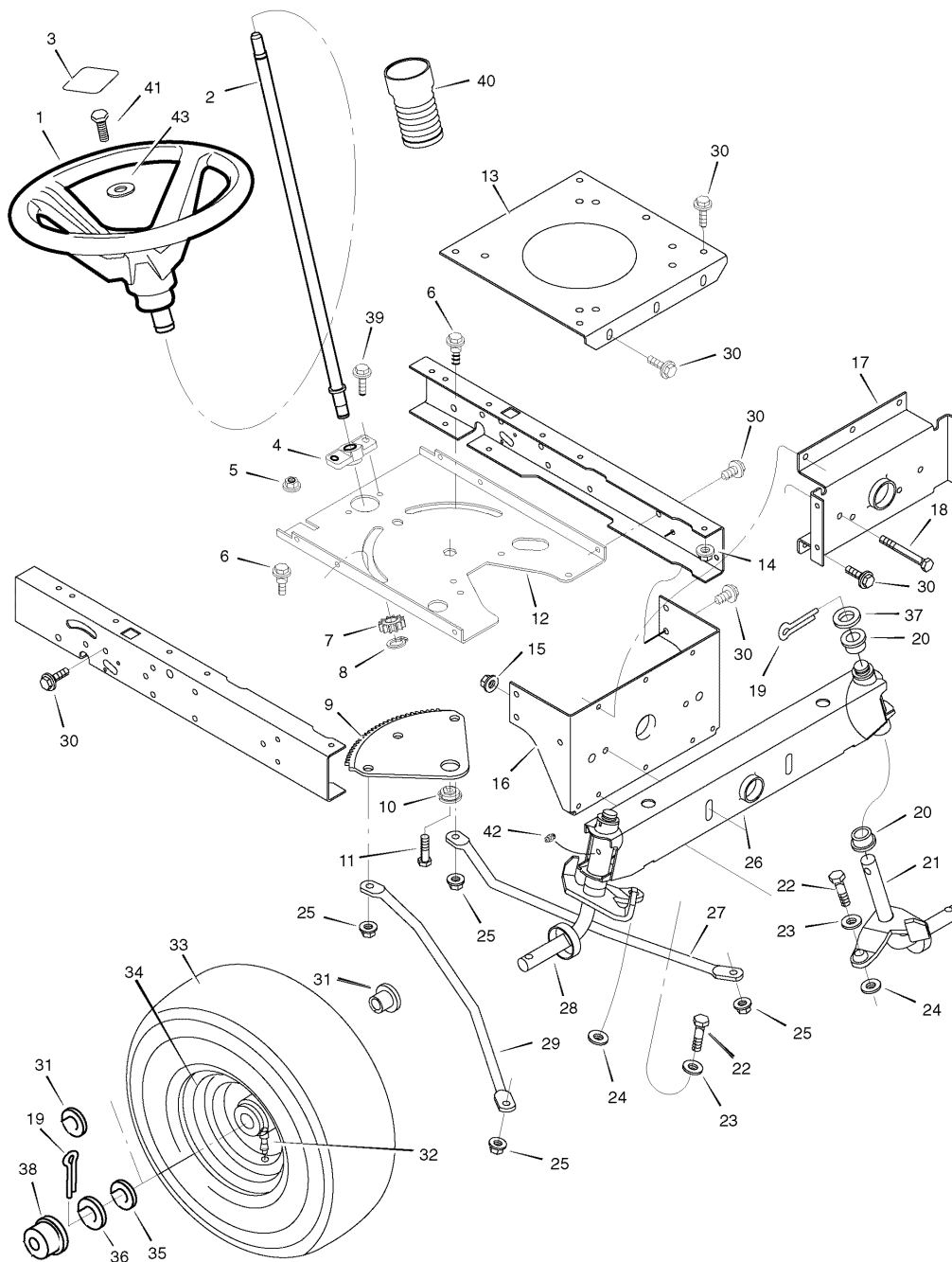


PRODUCT COMPONENTS	PAGES
Steering	4
Engine Mount	8
Drive Assembly	10
Electrical System	14
Chassis & Hood	16
Decals	20
Mower Housing	22
Mower Housing Suspension	26
Torque Specification Chart	Inside Back Cover

Steering

0007

**NOTE: Unless noted otherwise,
use the standard hardware torque
specification chart.**



The above parts group applies to the following Mfg. Nos.:
405627x51A Lawn Tractor (2007)

Steering

REF NO	PART NO.	DESCRIPTION
1	095185MA	Wheel, Steering 4 Spoke
2	690625MA	Post, Steering
3	711326MA	Cover, Steering Wheel
4	094124MA	** Bearing
5	15x111MA	** Nut, Flange
6	009x57MA	Bolt, Shoulder
7	1001893MA	** Gear, Pinion
8	011x25MA	** Ring, Snap
9	094121MA	Gear, Sector
10	094123MA	Bearing
11	001x84MA	Bolt
12	1001121E701MA	Plate, Steering
13	094006E701MA	Plate, Engine
14	015x88MA	Nut, Flange
15	15x118MA	Nut, Flange
16	1001270E701MA	Bracket, Hanger
17	094007E701MA	Axle, Hanger
18	01x146MA	Bolt
19	030x49MA	Pin, Cotter
20	690150MA	Bearing
21	094576E701MA	Spindle Assembly, Left
22	01x111MA	Bolt
23	17x104MA	Washer
24	017x53MA	Washer
25	015x84MA	Nut, Flange
26	1001460E701MA	Axle Assembly
27	095329E701MA	Drag Link, Left
28	094575E701MA	Spindle Assembly, Right
29	095328E701MA	Drag Link, Right
30	26x249MA	Screw
31	091334MA	Bearing, Wheel
32	024373MA	Stem, Valve
33	091912MA	* Tire
34	407924MA	Tube
34	1001840601MA	Wheel and Tire Assembly
35	17x195MA	Washer
36	17x192MA	Washer
37	17x113MA	Washer
38	094618MA	Hub Cap
39	26x267MA	Screw
40	092059MA	Bellows
41	0025x3MA	Bolt
42	092530MA	Fitting, Lube

Footnotes

Note * When you order a tire, make sure to give the brand name of the tire so that the tread pattern on the tire will match.

Note ** These parts are included when ordering Ref. No. 2.

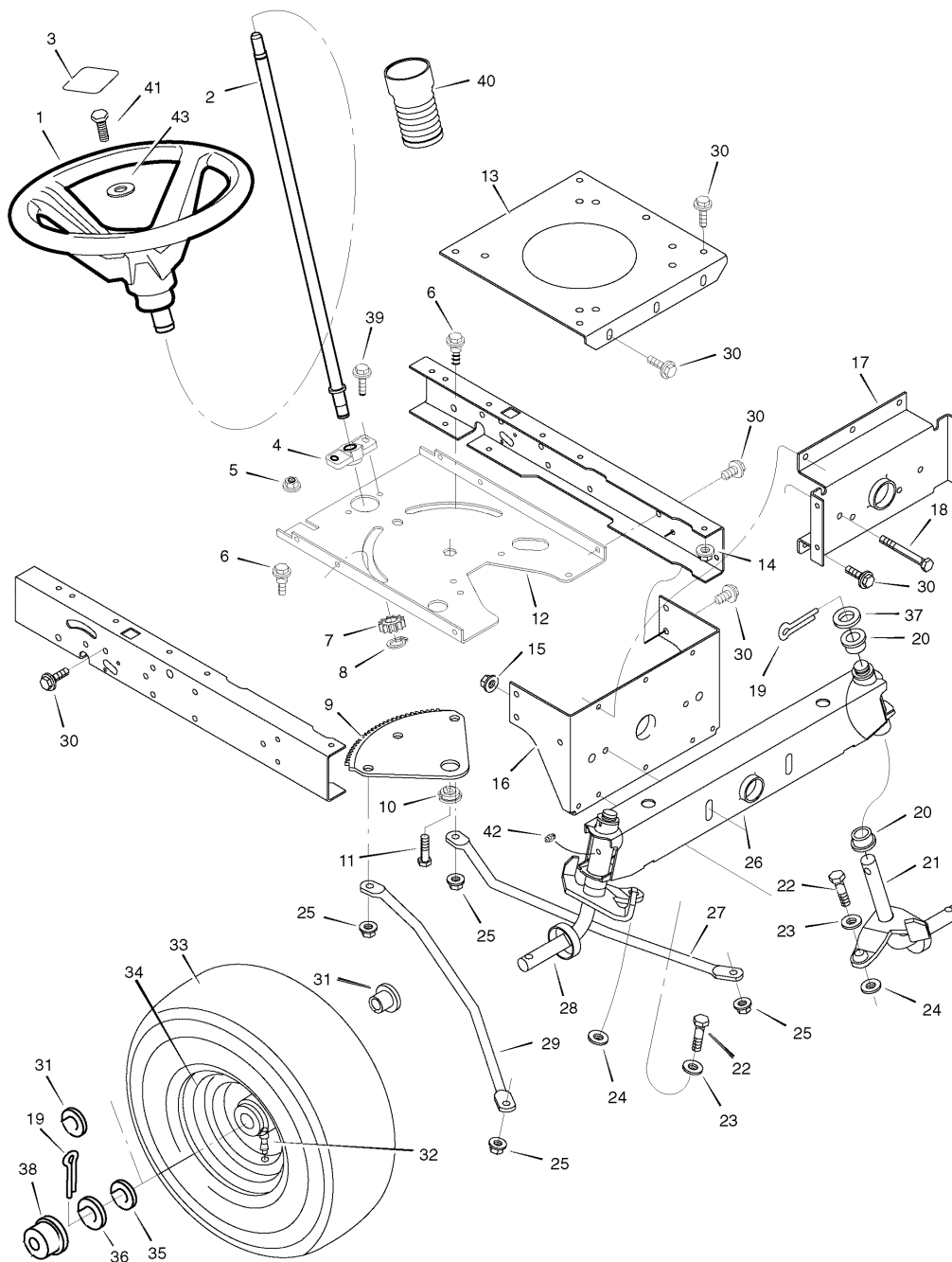
The above parts group applies to the following Mfg. Nos.:

405627x51A Lawn Tractor (2007)

Steering

0007

**NOTE: Unless noted otherwise,
use the standard hardware torque
specification chart.**



The above parts group applies to the following Mfg. Nos.:
405627x51A Lawn Tractor (2007)

Steering

REF NO	PART NO.	DESCRIPTION
43	17x146MA	Washer

Footnotes

Note * When you order a tire, make sure to give the brand name of the tire so that the tread pattern on the tire will match.

Note ** These parts are included when ordering Ref. No. 2.

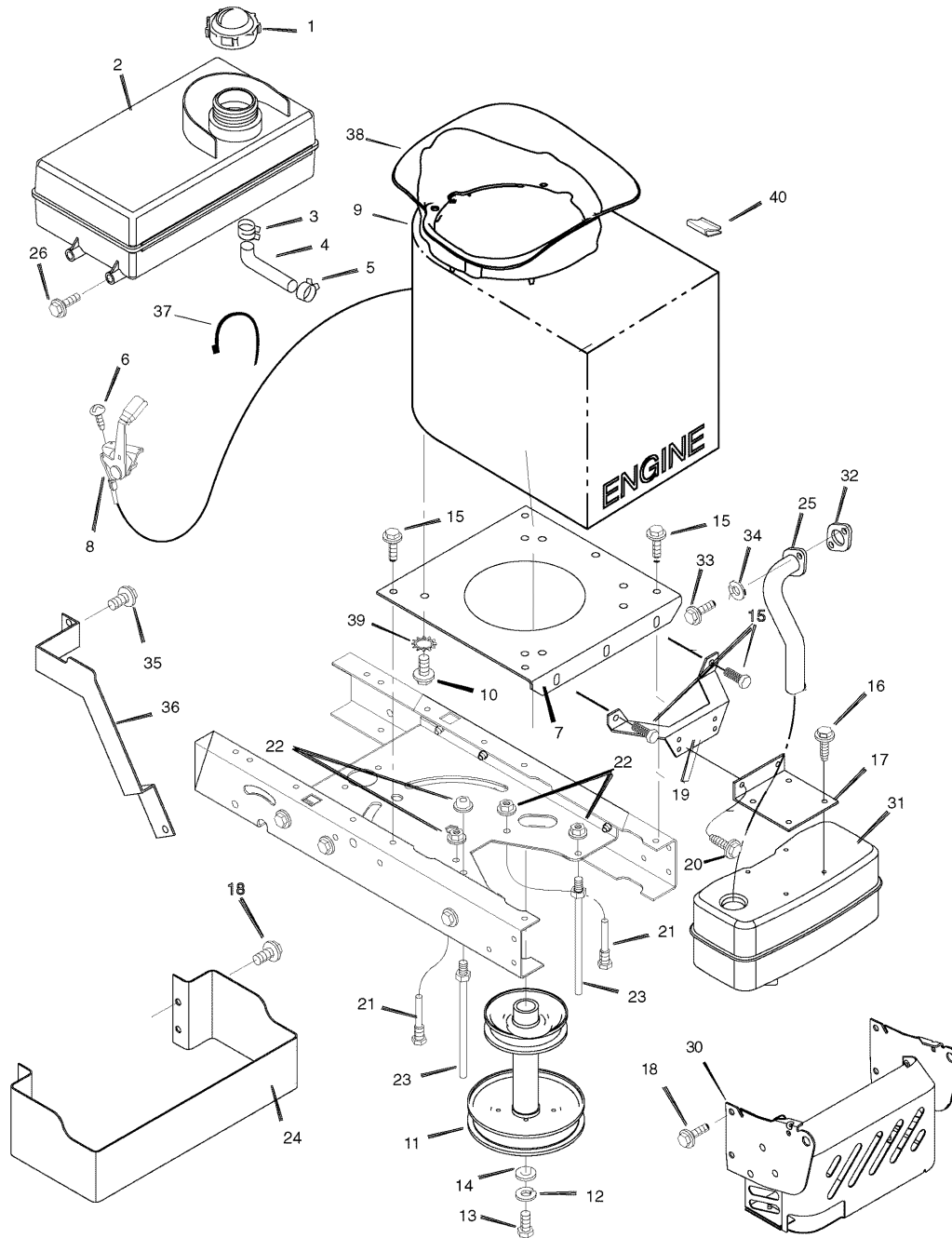
The above parts group applies to the following Mfg. Nos.:

405627x51A Lawn Tractor (2007)

Engine Mount

0013

NOTE: Unless noted otherwise,
use the standard hardware torque
specification chart.



The above parts group applies to the following Mfg. Nos.:
405627x51A Lawn Tractor (2007)

Engine Mount

REF NO	PART NO.	DESCRIPTION
1	092317MA	**Fuel Cap
2	094073MA	Fuel Tank
3	095197MA	**Hose Clamp
4	7601033MA	**Fuel Line
5	095197MA	**Hose Clamp
6	26x201MA	Screw
7	094006E701MA	Plate, Engine
8	092371MA	Throttle Control
9	*	Engine, Briggs & Stratton (Model: 21A8070124B1)
10	0025x7MA	Bolt, Engine Mount
11	690439ZMA	Stack Pulley Assembly
12	019x35MA	Lockwasher
13	01x140MA	Bolt, Hex
14	17x170MA	Washer
15	26x249MA	Screw
16	26x229MA	Screw
17	690538E701MA	Bracket, Muffler
18	26x277MA	Screw
19	690537E701MA	Bracket, Muffler Mount
20	26x213MA	Screw
21	094384MA	Guide, Belt
22	015x79MA	Nut, Flange
23	094066MA	Guide, Belt
24	1740502E701MA	Guard, Heat Shield
25	1001747MA	Exhaust Tube, Single
26	26x253MA	Screw
30	1740501E701MA	Shield, Heat
31	094654MA	Muffler
32	091309MA	Gasket
33	06x103MA	Screw
34	018x15MA	Washer
35	06x104MA	Bolt, Washer Hex Head
36	1740504E701MA	Guard, Exhaust Pipe
37	032618MA	Tie, Strap Black
38	1001587MA	Plenum - X1 - M28/31
39	0019x8MA	Washer, Star
40	055939MA	Clip, Wire Adhesive

Footnotes

Note * For information on Replacement Parts for this engine contact the manufacturer.

Note ** These parts are included with Ref. No. 2.

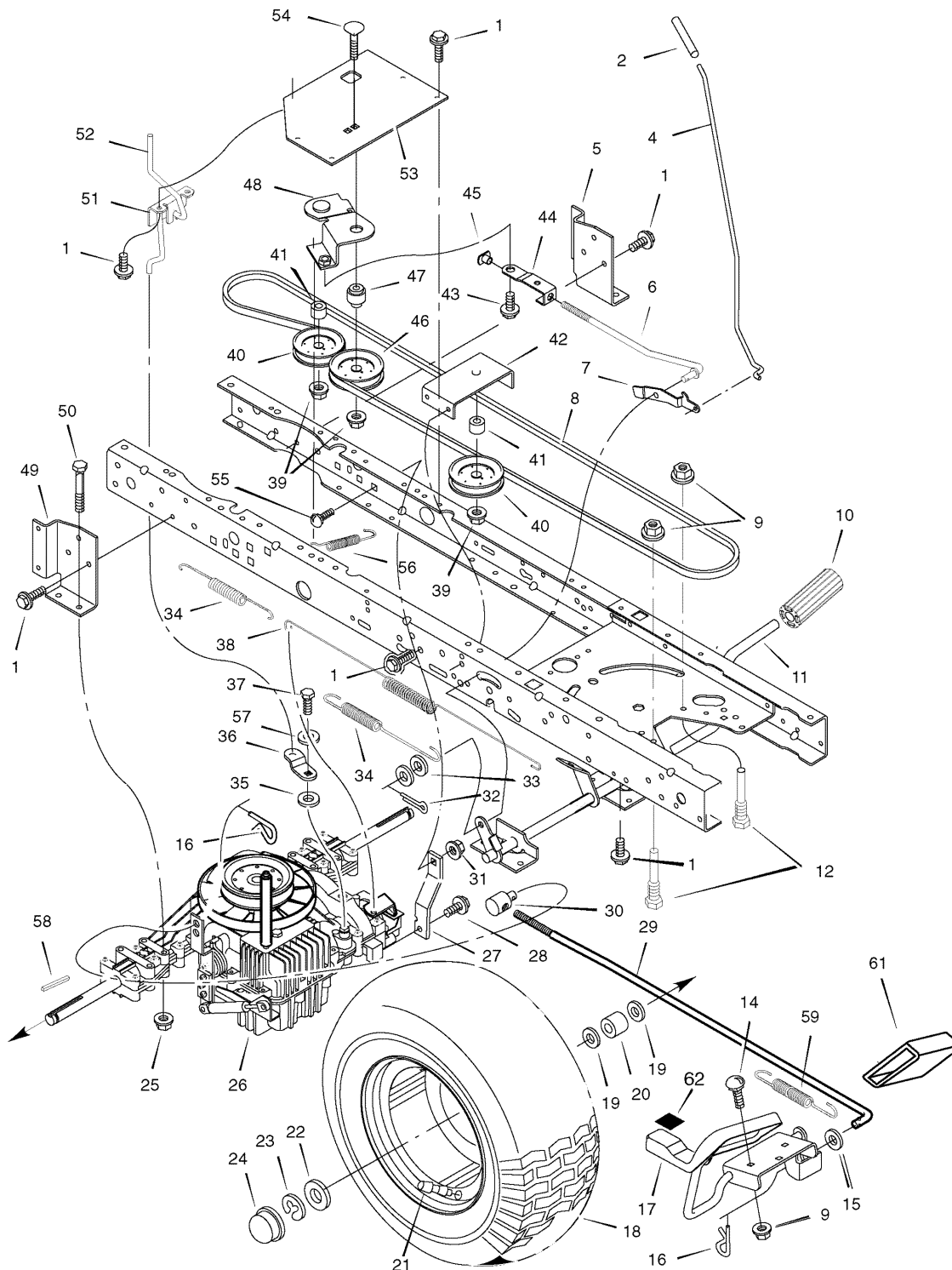
The above parts group applies to the following Mfg. Nos.:

405627x51A Lawn Tractor (2007)

Drive Assembly

0005

NOTE: Unless noted otherwise,
use the standard hardware torque
specification chart.



The above parts group applies to the following Mfg. Nos.:
405627x51A Lawn Tractor (2007)

Drive Assembly

REF NO	PART NO.	DESCRIPTION
1	26x249MA	Screw
2	091079MA	Grip, Parking Brake
4	1001245ZMA	Rod, Parking Brake
5	094008E701MA	Bracket, Left Transaxle
6	1001013ZMA	Rod, Clutch
7	094045ZMA	Latch, Parking Brake
8	37x106MA	V-Belt, Drive
9	015x79MA	Nut, Flange
10	021544MA	Pedal, Brake/Clutch
11	1001011E701MA	Assembly, Brake Pedal
12	094384MA	Screw, Guide
14	002x53MA	Bolt, Carriage
15	017x57MA	Washer
16	0031x4MA	Pin, Hair
17	095121E701MA	Pedal Assembly, Hydro
18	092289601MA	Wheel & Tire Assy, Rear
--	091914MA	*Tire ONLY
--	407049MA	Tube ONLY
19	17x160MA	Washer
20	690554ZMA	Spacer
21	024373MA	Stem, Valve
22	17x195MA	Washer
23	0011x3MA	E--Ring
24	094618MA	Cap, Hub
25	015x88MA	Nut, Centerlock
26	**	Transaxle, Peerless Hydro
27	1001085E701MA	Strap, Torque
28	26x216MA	Screw
29	1001234ZMA	Rod, Control
30	092132ZMA	Nut, Adjusting
31	015x84MA	Nut, Centerlock
32	030x20MA	Pin, Cotter
33	017x48MA	Washer
34	165x92MA	Spring, Extension
35	17x148MA	Washer
36	1001086ZMA	Arm, Disconnect
37	06x105MA	Capscrew
38	165x150MA	Spring, Brake
39	015x98MA	Locknut, Flange
40	690409MA	Pulley, Idler
41	690369MA	Spacer
42	1001097E701MA	Bracket, Idler Assembly
43	009x49MA	Bolt, Shoulder

Footnotes

Note* When you order a tire, make sure to give the brand name of the tire so that the tread pattern on the tire will match.

Note** For information on Replacement Parts for this transaxle contact the manufacturer.

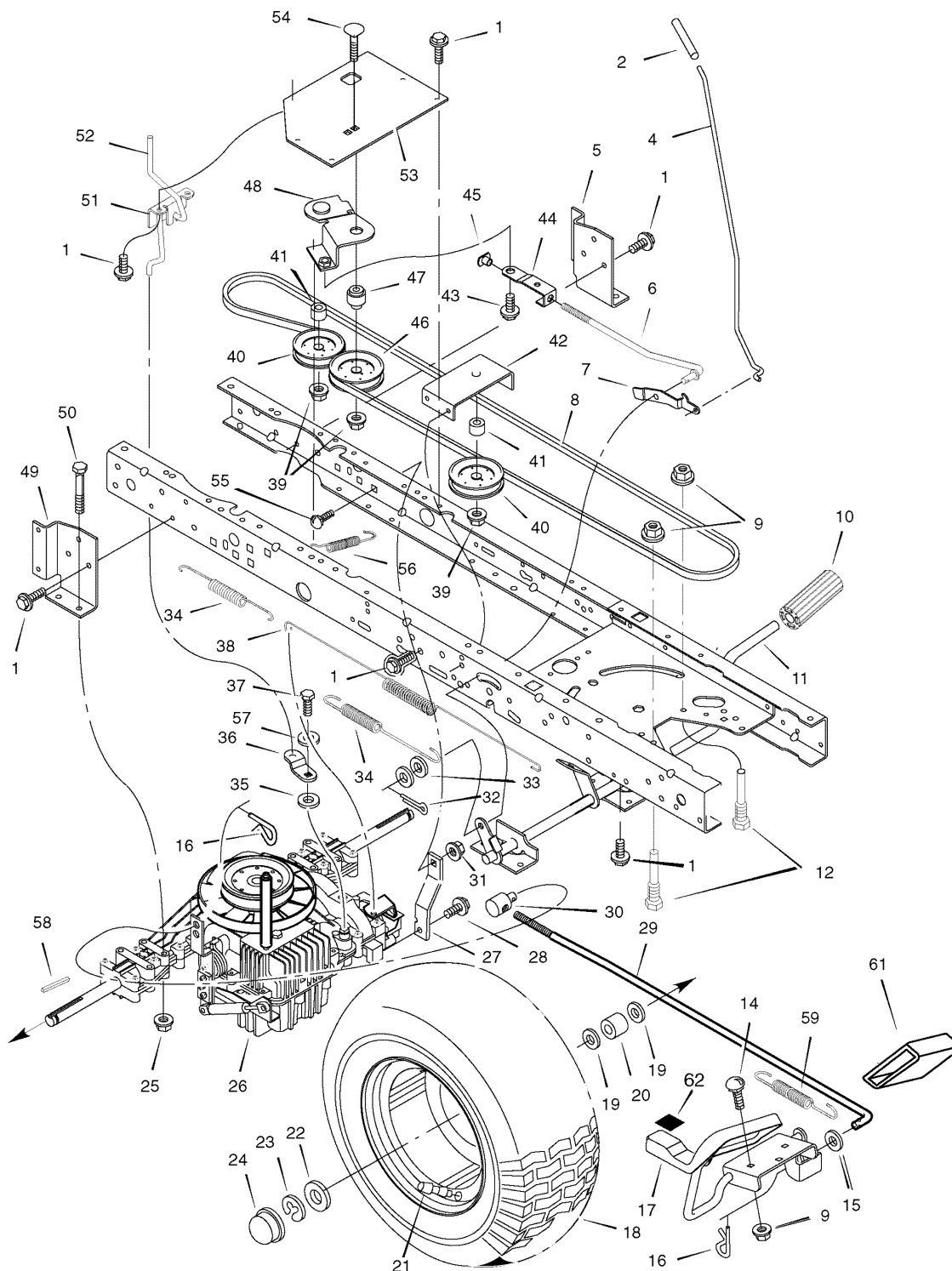
The above parts group applies to the following Mfg. Nos.:

405627x51A Lawn Tractor (2007)

Drive Assembly

0005

NOTE: Unless noted otherwise,
use the standard hardware torque
specification chart.



The above parts group applies to the following Mfg. Nos.:
405627x51A Lawn Tractor (2007)

Drive Assembly

REF NO	PART NO.	DESCRIPTION
44	1001007ZMA	Link, Clutch
45	1001014MA	Nut, Tee
46	690410MA	Pulley, Idler
47	1001012MA	Bushing, Pivot
48	1001018ZMA	Arm Assembly, Idler
49	094008E701MA	Bracket, Right Transaxle
50	01x155MA	Bolt, Hex
51	1001214ZMA	Bracket, Dump Valve
52	1001215ZMA	Rod, Roll Release
53	1001108E701MA	Bracket, Idler Pivot
54	002x92MA	Bolt, Carriage
55	002x78MA	Bolt, Carriage
56	165x155MA	Spring, Clutch
57	017x38MA	Washer
58	021553MA	Key, Square 3/16"
59	165x168MA	Spring
61	094953MA	Pad, Hydro Pedal
62	093249MA	Mat, Toe-Reverse

Footnotes

Note* When you order a tire, make sure to give the brand name of the tire so that the tread pattern on the tire will match.

Note** For information on Replacement Parts for this transaxle contact the manufacturer.

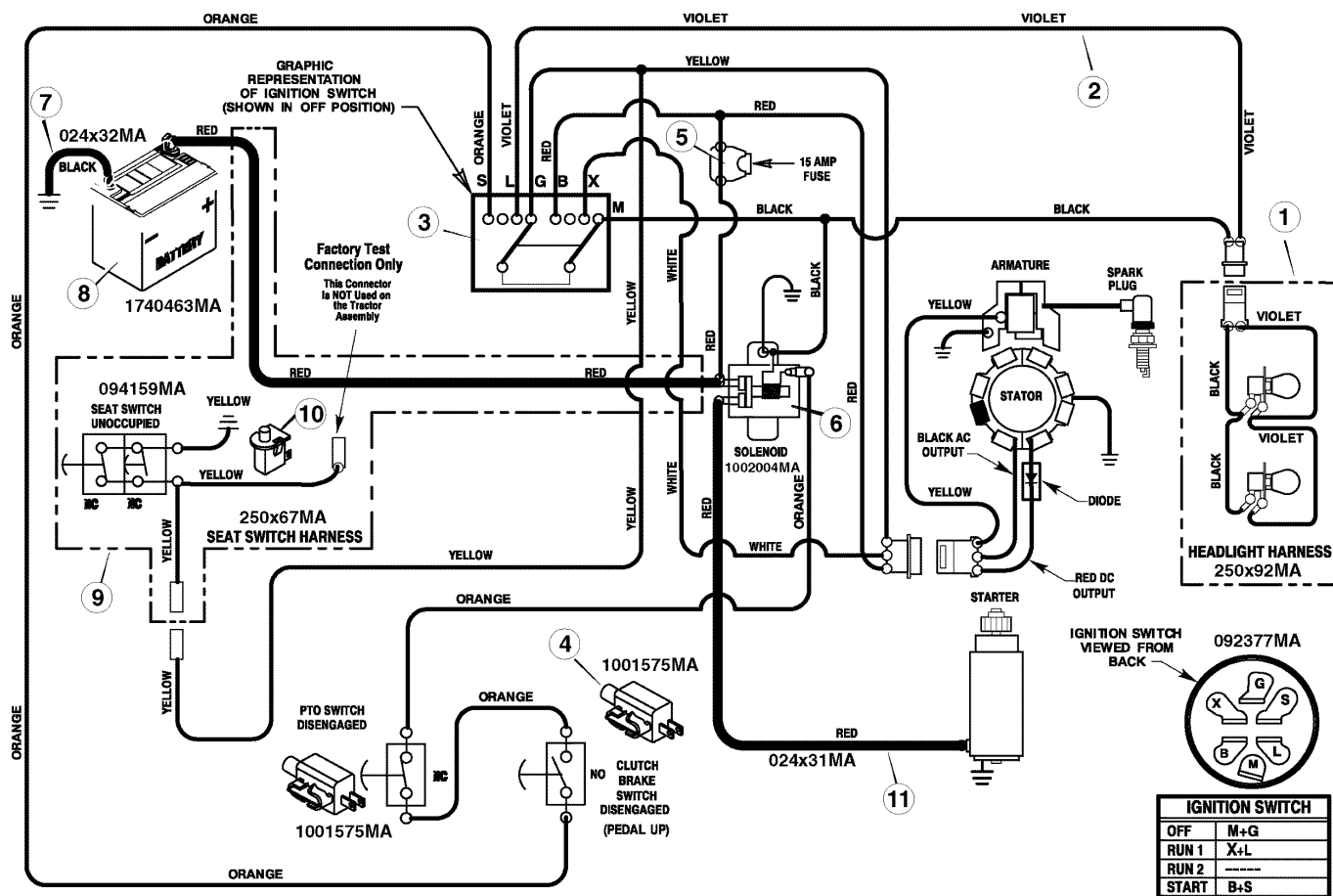
The above parts group applies to the following Mfg. Nos.:

405627x51A Lawn Tractor (2007)

Electrical System

0015

NOTE: Unless noted otherwise, use the standard hardware torque specification chart.



MAIN HARNESS: 250X113MA
 REAR HARNESS: 250X149MA
 LIGHT HARNESS: 250X92MA

The above parts group applies to the following Mfg. Nos.:
 405627x51A Lawn Tractor (2007)

Electrical System

REF NO	PART NO.	DESCRIPTION
1	250x92MA	Harness, Light Wire
--	1001716MA	Socket, Light
--	090084MA	Bulb, Light
2	250x113MA	Harness, Chassis Wire
3	092556MA	Switch, Ignition
--	020729MA	Key, Ignition
--	091489MA	Nut, Hex
--	091488MA	Cap, Ignition
4	1001575MA	Switch, Limit
5	302031MA	Fuse
--	407078MA	Holder, Fuse
6	1002004MA	Solenoid
--	26x229MA	Screw, Mounting
--	15x116MA	Locknut
7	024x32MA	Cable, Battery Ground
--	26x229MA	Screw, Ground Cable
8	1740463MA	Battery
--	002x82MA	Bolt, Carriage
--	014x79MA	Wingnut
--	690604MA	Boot, Battery --Positive
9	250x149MA	Harness, Seat Switch Wire
10	094159MA	Switch, Seat Sensor
11	024x31MA	Cable

Footnotes

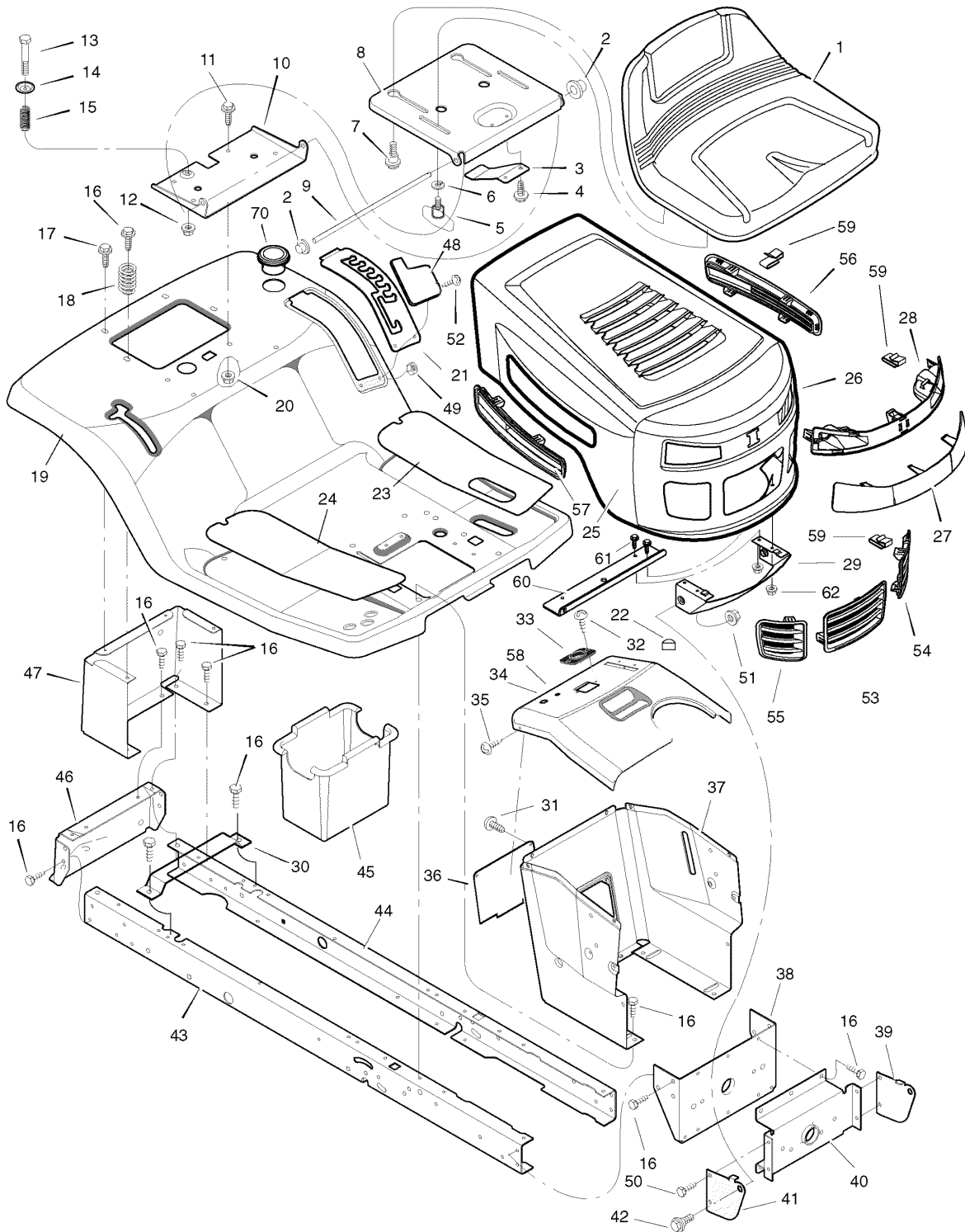
The above parts group applies to the following Mfg. Nos.:

405627x51A Lawn Tractor (2007)

Chassis & Hood

0003

NOTE: Unless noted otherwise,
use the standard hardware torque
specification chart.



The above parts group applies to the following Mfg. Nos.:
405627x51A Lawn Tractor (2007)

Chassis & Hood

REF NO	PART NO.	DESCRIPTION
1	690566MA	Seat
2	028x23MA	Cap, Push On
3	094057MA	Spring
4	26x229MA	Screw
5	1001054MA	Bolt, Wing
6	017x47MA	Washer
7	009x56MA	Bolt, Shoulder
8	094154E701MA	Support, Seat
9	094156ZMA	Rod, Pivot
10	1001648E701MA	Bracket, Pivot
11	001x45MA	Bolt
12	015x89MA	Nut
13	009x55MA	Bolt, Shoulder
14	094155ZMA	Washer
15	164x31MA	Spring
16	26x249MA	Screw
17	26x263MA	Screw
18	164x30MA	Spring
19	1001559E245MA	Deck, Seat
20	15x123MA	Nut
21	094829E701MA	Plate, Index Detent
22	094376MA	Bumper, Black
23	094999MA	Mat, Left
24	094998MA	Mat, Right
25	1001797E245MA	Hood
26	1001798E245MA	Grille
27	1001806MA	Lens, Plastic Cover
28	1001547MA	Assembly, Headlamp
29	1001799E701MA	Bracket, Lower Pivot
30	690482E701MA	Support, Battery
31	26x270MA	Screw
32	26x238MA	Screw
33	1001491MA	Bearing, Steering
34	1001584E701MA	Dash
35	26x201MA	Screw
36	093007E701MA	Panel, Access
37	095318E701MA	Support, Dash
38	1001270E701MA	Bracket, Rear Hanger
39	094083E701MA	Support, Left Grille
40	094007E701MA	Axle, Hanger
41	094082E701MA	Support, Right Grille
42	009X58MA	Bolt, Shoulder
43	1001928E701MA	Frame, Right

Footnotes

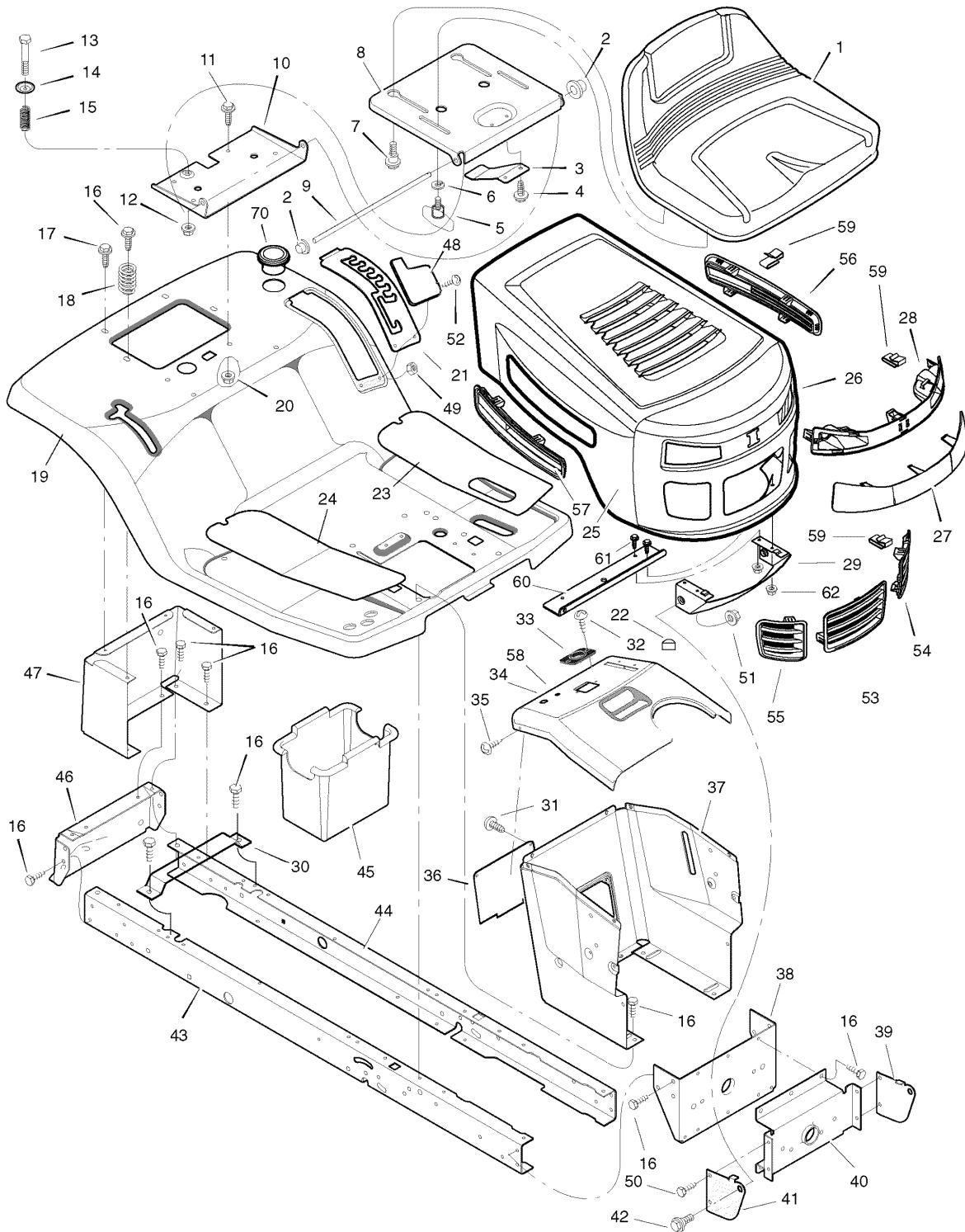
The above parts group applies to the following Mfg. Nos.:

405627x51A Lawn Tractor (2007)

Chassis & Hood

0003

NOTE: Unless noted otherwise,
use the standard hardware torque
specification chart.



The above parts group applies to the following Mfg. Nos.:
405627x51A Lawn Tractor (2007)

Chassis & Hood

REF NO	PART NO.	DESCRIPTION
44	1001927E701MA	Frame, Left
45	690424MA	Container, Battery
46	1001002E701MA	Plate, Hitch
47	690434E701MA	Panel, Rear
48	094610MA	Cover, Detent
49	015X81MA	Nut
50	26X277MA	Screw
51	15x124MA	Nut
52	009X47MA	Screw
53	1001802MA	Insert, Grille Center
54	1001803MA	Insert, Left Grille
55	1001804MA	Insert, Right Grille
56	1001800MA	Insert, Hood Left
57	1001801MA	Insert, Hood Right
58	1001755MA	Grommet, Parking Brake
59	028X83MA	Fastener, S-Clip
60	1001879MA	Bracket, Support
61	0025X3MA	Screw
62	015X82MA	Nut
70	1001542MA	Holder, Cup
--	1002050	Bag Assembly, Parts
--	1740490	Instruction Book
--	1740491	Manual, Parts List

Footnotes

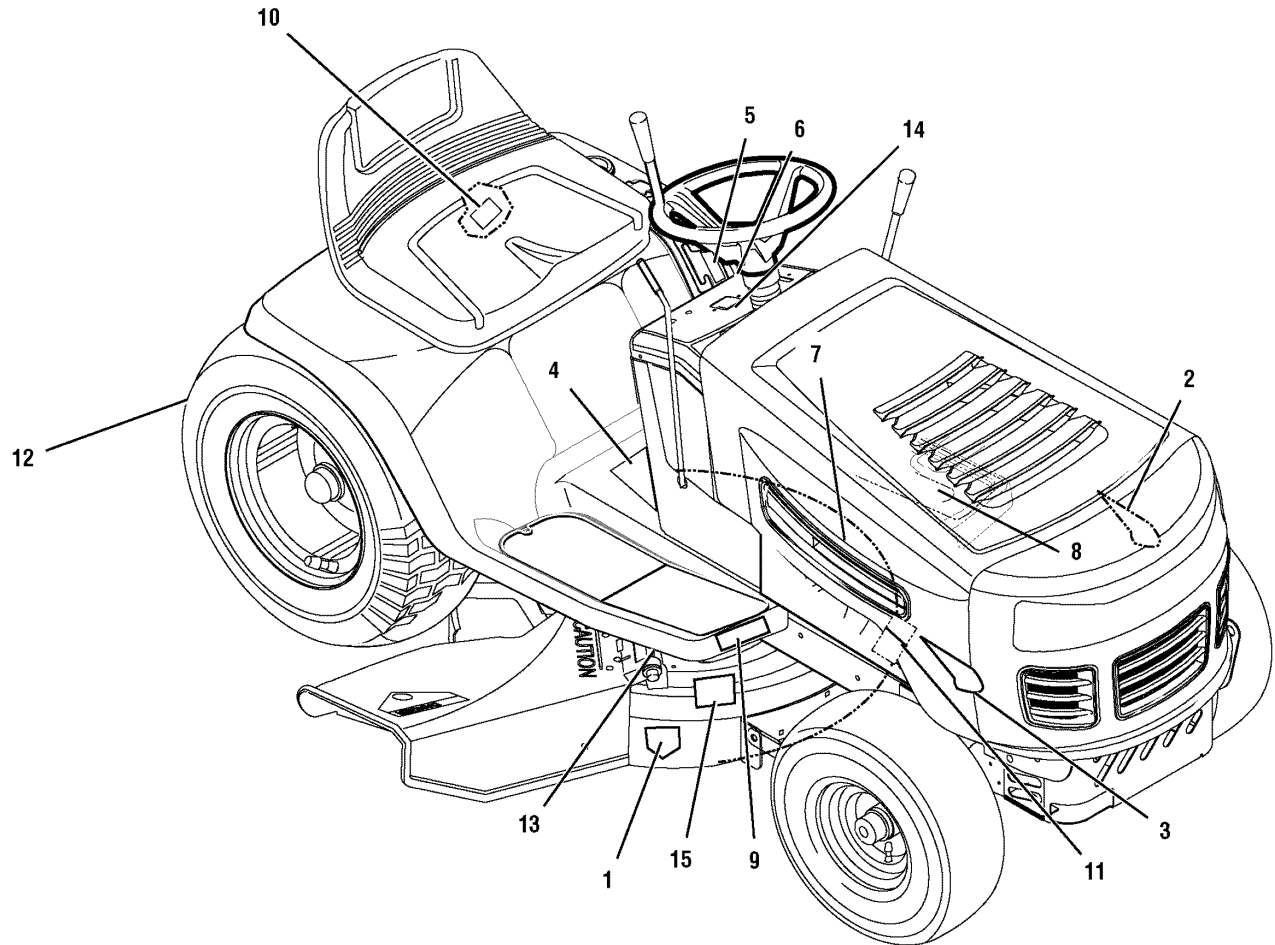
The above parts group applies to the following Mfg. Nos.:

405627x51A Lawn Tractor (2007)

Decals

0023

NOTE: Unless noted otherwise,
use the standard hardware torque
specification chart.



The above parts group applies to the following Mfg. Nos.:

405627x51A Lawn Tractor (2007)

Decals

REF NO	PART NO.		DESCRIPTION
1	48X4033MA	1	DECAL, Cut Finger Symbols
2	1740542MA	1	DECAL, 130/102
3	1740552MA	1	DECAL, Murray
4	48X4032MA	1	DECAL, Warning Export
5	44X7026MA	1	DECAL, 7 Position Cut Height
6	44X7027MA	1	DECAL, Deck Level
7	48X4034MA	1	DECAL, No Step Export
8	48X736MA	1	DECAL, Brake/Clutch Export
9	44X6675MA	1	DECAL, Hydro Drive
10	44X6962MA	1	DECAL, Auto Drive Dump Valve
11	44X5936MA	1	DECAL, Heat Shield Warning
12	48X511MA	1	DECAL, Warning Load Limit Export
13	44X6828MA	1	DECAL, Warning Pinch Point
14	44X6817MA	1	DECAL, Dash/Symbols W1
15	48X5911MA	1	DECAL, 100db Export

Footnotes

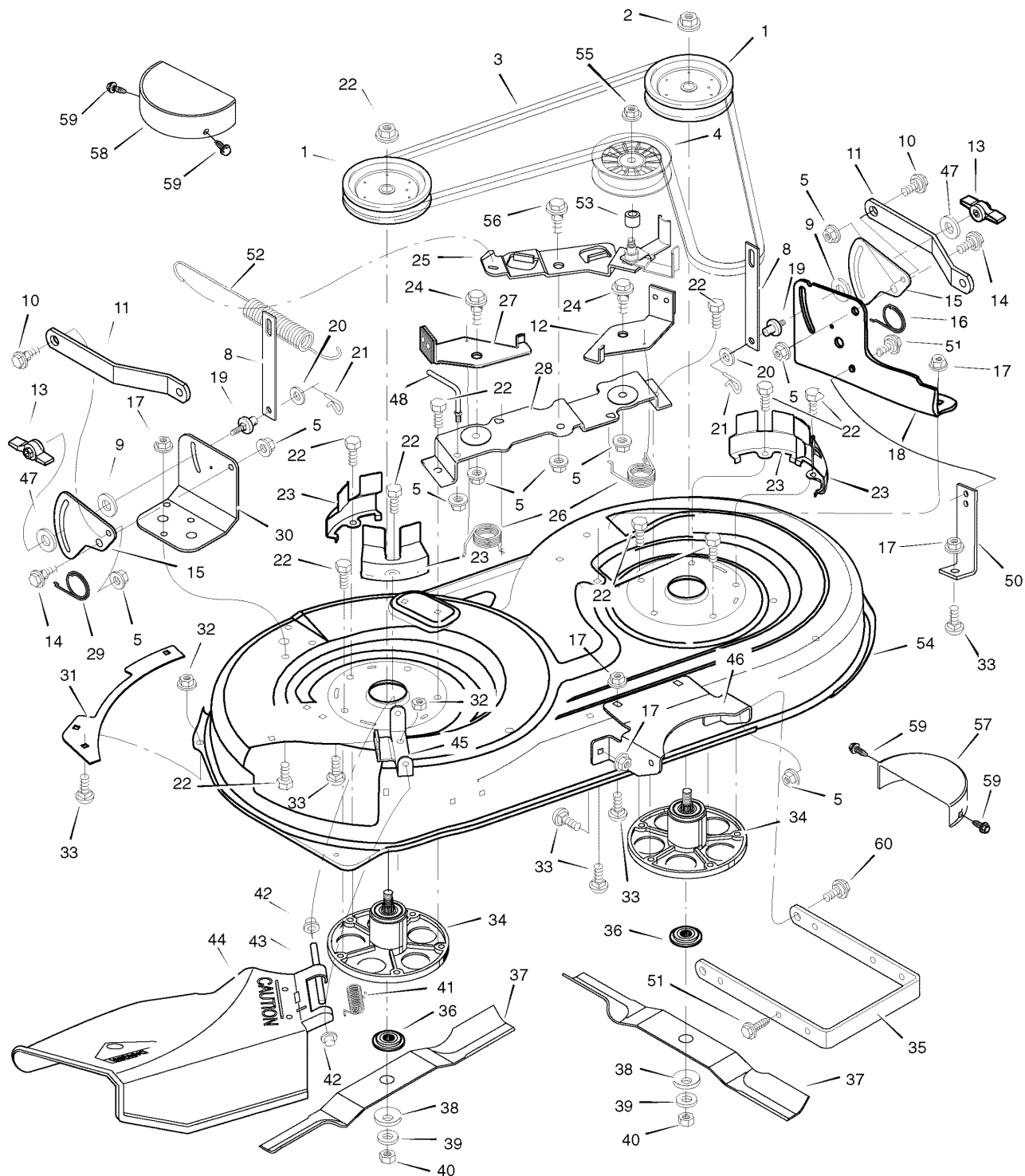
The above parts group applies to the following Mfg. Nos.:

405627x51A Lawn Tractor (2007)

Mower Housing

NOTE: Unless noted otherwise,
use the standard hardware torque
specification chart.

0011



The above parts group applies to the following Mfg. Nos.:
405627x51A Lawn Tractor (2007)

Mower Housing

REF NO	PART NO.	DESCRIPTION
1	092851MA	Pulley, Jackshaft
2	15x140MA	Nut, Hex
3	037x62MA	Belt, Mower Drive
4	091801MA	Pulley, Idler
5	015x84MA	Nut, Flange
8	690212E701MA	Link, Lift
9	094137MA	Pad, Friction
10	009x52MA	Bolt, Shoulder
11	094055E701MA	Bracket, Suspension
12	094049E701MA	Pad Assembly, Left Brake
13	094068MA	Knob
14	009x51MA	Bolt, Shoulder
15	094128E701MA	Plate, Suspension
16	166x43MA	Spring
17	015x79MA	Nut, Flange
18	094143E701MA	Bracket, Suspension
19	095194MA	Pin, Hanger
20	017x91MA	Washer
21	0031x4MA	Pin, Cotter
22	0025x6MA	Bolt 3/8 x 1"
23	094051E701MA	Cover, Pulley
24	009x39MA	Bolt, Shoulder
25	1001500MA	Arm, Idler
26	166x41MA	Spring
27	094047E701MA	Pad Assembly, Right Brake
28	094145E701MA	Bracket Assembly, Brake
29	166x42MA	Spring
30	094142E701MA	Bracket, Suspension
31	091770E701MA	Plate
32	015x88MA	Nut, Flange
33	002x53MA	Bolt, Carriage
34	1001200MA	Mandrell (Includes Key 6)
35	690539E701MA	Bracket, Suspension
36	690411MA	Adapter, Blade
37	1001428E701MA	Blade
38	17x166MA	Washer
39	17x165MA	Washer
40	15x100MA	Nut
41	0166x4MA	Spring
42	028x23MA	Cap, Push On
43	094957ZMA	Rod, Pivot
44	094707MA	Deflector Assembly
45	094956E701MA	Bracket, Deflector

Footnotes

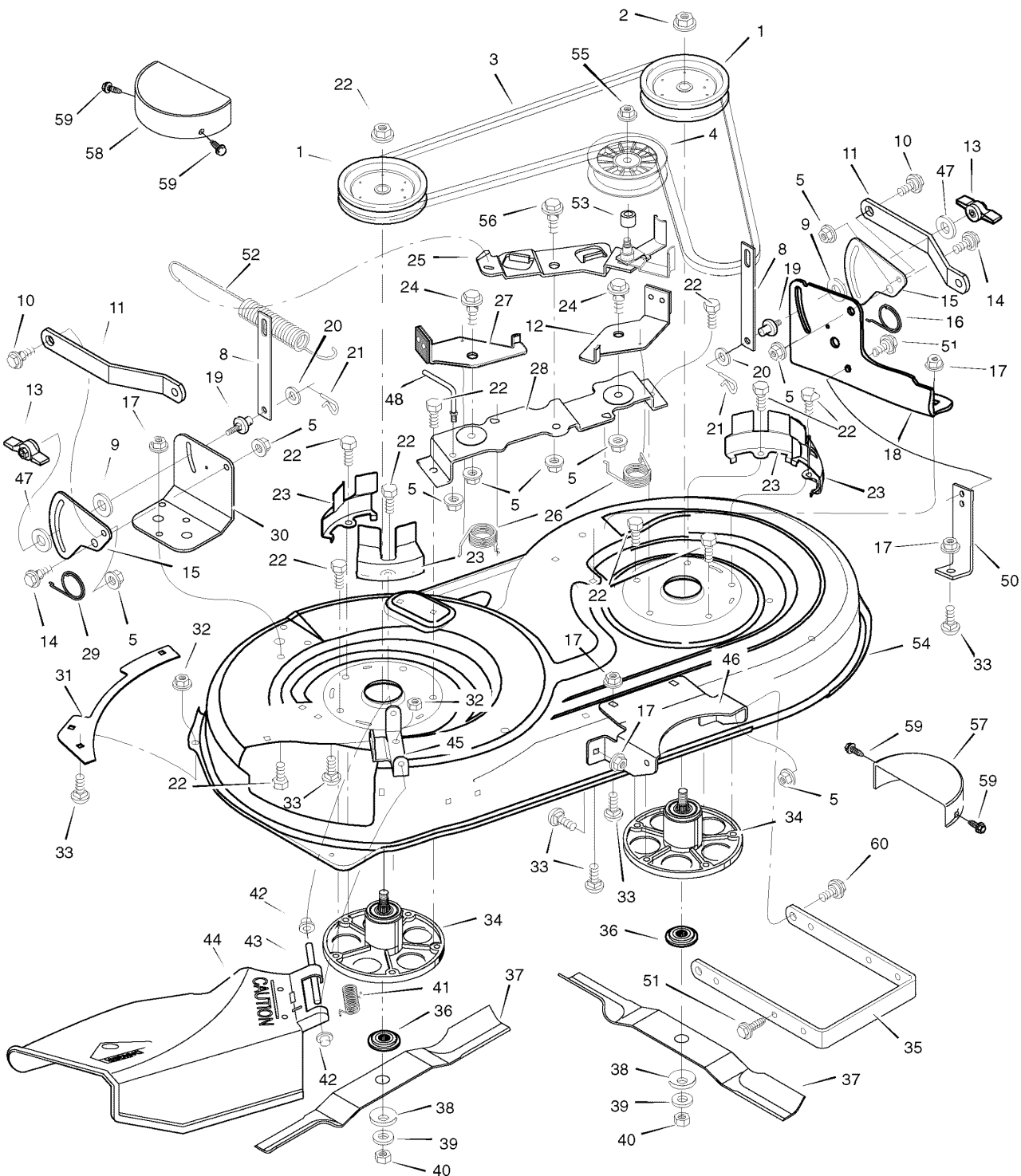
The above parts group applies to the following Mfg. Nos.:

405627x51A Lawn Tractor (2007)

Mower Housing

NOTE: Unless noted otherwise, use the standard hardware torque specification chart.

0011



The above parts group applies to the following Mfg. Nos.:
405627x51A Lawn Tractor (2007)

Mower Housing

REF NO	PART NO.	DESCRIPTION
46	094144E701MA	Bracket, Front Hanger
47	017x45MA	Washer
48	094781MA	Guide, Belt
50	094681E701MA	Bracket, Support
51	26x249MA	Screw
52	165x119MA	Spring, Extension
53	690369MA	Spacer
54	094140MA	Housing, Blade
55	015x98MA	Nut, Flange
56	009x72MA	Bolt, Shoulder
57	094668MA	Cover, Belt L.H.
58	094669MA	Cover, Belt R.H.
59	26X263MA	Screw
60	009x58MA	Bolt, Shoulder

Footnotes

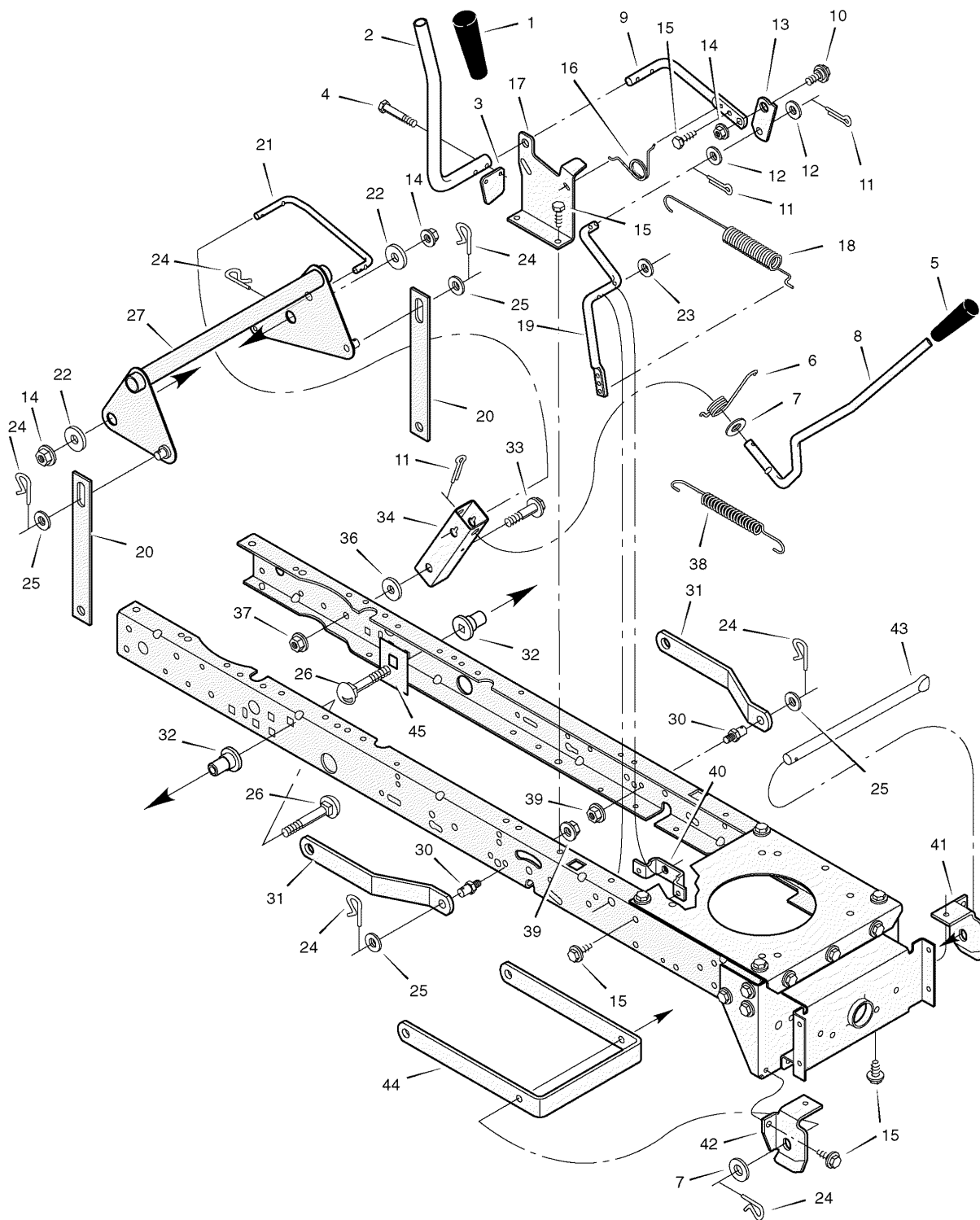
The above parts group applies to the following Mfg. Nos.:

405627x51A Lawn Tractor (2007)

Mower Housing Suspension

0009

NOTE: Unless noted otherwise, use the standard hardware torque specification chart.



The above parts group applies to the following Mfg. Nos.:
405627x51A Lawn Tractor (2007)

Mower Housing Suspension

REF NO	PART NO.	DESCRIPTION
1	092698MA	Grip
2	094157ZMA	Handle, PTO
3	094022ZMA	Pad, Switch
4	0025x3MA	Bolt
5	092697MA	Grip
6	166x40MA	Spring
7	17x103MA	Washer
8	690533MA	Handle, Lift
9	094017ZMA	Lever, PTO
10	009x39MA	Bolt, Shoulder
11	030x20MA	Pin, Cotter
12	017x57MA	Washer
13	094004ZMA	Link, PTO
14	015x84MA	Nut, Flange
15	26x249MA	Screw
16	166x39MA	Spring
17	094018E701MA	Bracket, PTO
18	165x119MA	Spring, PTO
19	690394E701MA	Crank, PTO
20	690212E701MA	Link, Lift
21	690122E701MA	Link, Lift Handle
22	17X168ZMA	Washer
23	017x57MA	Washer
24	0031x4MA	Pin, Hair
25	017x91MA	Washer
26	002x85MA	Bolt, Carriage
27	1001111E701MA	Lever Assembly, Lift
30	094067MA	Pin
31	094055E701MA	Bracket, Rear Suspension
32	690151MA	Spacer, Lifter
33	009x53MA	Bolt, Shoulder
34	094015E701MA	Bracket, Pivot
36	17x191MA	Washer
37	015x84MA	Nut, Flange
38	165x131MA	Spring
39	015x68MA	Nut, Flange
40	094005E701MA	Bracket, PTO
41	094027E701MA	Hanger, Left Deck
42	094026E701MA	Hanger, Right Deck
43	094158ZMA	Rod, Hanger
44	690539E701MA	Bracket, Suspension
45	1001098E701MA	Plate, Stiffening

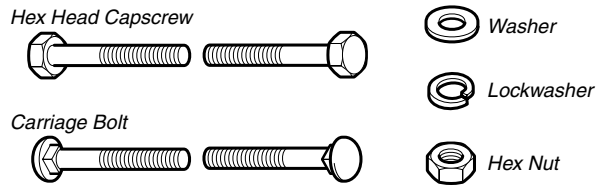
Footnotes

The above parts group applies to the following Mfg. Nos.:

405627x51A Lawn Tractor (2007)

Hardware Identification & Torque Specifications

Common Hardware Types

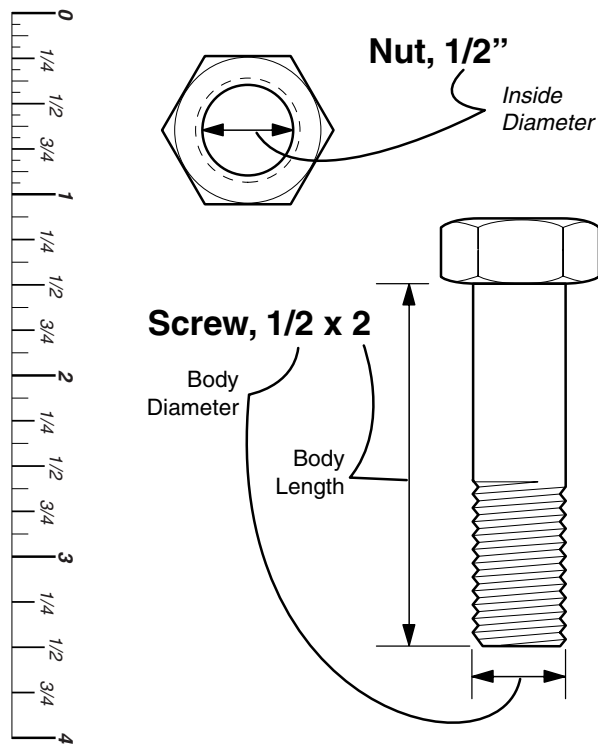


Standard Hardware Sizing

When a washer or nut is identified as 1/2", this is the *Nominal size*, meaning the *inside diameter* is 1/2 inch; if a second number is present it represents the *threads per inch*

When bolt or capscrew is identified as 1/2 - 16 x 2", this means the *Nominal size*, or *body diameter* is 1/2 inch; the second number represents the *threads per inch* (16 in this example, and the final number is the *body length* of the bolt or screw (in this example 2 inches long).

The guides and ruler furnished below are designed to help you select the appropriate hardware and tools.



Torque Specification Chart

FOR STANDARD MACHINE HARDWARE (Tolerance ± 20%)

Hardware Grade	No Marks SAE Grade 2		SAE Grade 5		SAE Grade 8	
	in/lbs ft/lbs	Nm.	in/lbs ft/lbs	Nm.	in/lbs ft/lbs	Nm.
8-32	19	2.1	30	3.4	41	4.6
8-36	20	2.3	31	3.5	43	4.9
10-24	27	3.1	43	4.9	60	6.8
10-32	31	3.5	49	5.5	68	7.7
1/4-20	66	7.6	8	10.9	12	16.3
1/4-28	76	8.6	10	13.6	14	19.0
5/16-18	11	15.0	17	23.1	25	34.0
5/16-24	12	16.3	19	25.8	27	34.0
3/8-16	20	27.2	30	40.8	45	61.2
3/8-24	23	31.3	35	47.6	50	68.0
7/16-14	30	40.8	50	68.0	70	95.2
7/16-20	35	47.6	55	74.8	80	108.8
1/2-13	50	68.0	75	102.0	110	149.6
1/2-20	55	74.8	90	122.4	120	163.2
9/16-12	65	88.4	110	149.6	150	204.0
9/16-18	75	102.0	120	163.2	170	231.2
5/8-11	90	122.4	150	204.0	220	299.2
5/8-18	100	136	180	244.8	240	326.4
3/4-10	160	217.6	260	353.6	386	525.0
3/4-16	180	244.8	300	408.0	420	571.2
7/8-9	140	190.4	400	544.0	600	816.0
7/8-14	155	210.8	440	598.4	660	897.6
1-8	220	299.2	580	788.8	900	1,244.0
1-12	240	326.4	640	870.4	1,000	1,360.0

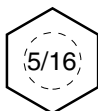
NOTES

- These torque values are to be used for all hardware excluding: locknuts, self-tapping screws, thread forming screws, sheet metal screws and socket head setscrews.
- Recommended seating torque values for locknuts:
 - for prevailing torque locknuts - use 65% of grade 5 torques.
 - for flange whizlock nuts and screws - use 135% of grade 5 torques.
- Unless otherwise noted on assembly drawings, all torque values must meet this specification.

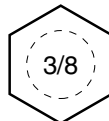
Wrench & Fastener Size Guide



1/4" Bolt or Nut
Wrench—7/16"



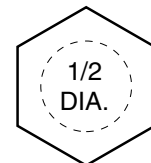
5/16" Bolt or Nut
Wrench—1/2"



3/8" Bolt or Nut
Wrench—9/16"



7/16" Bolt or Nut
Wrench (Bolt)—5/8"
Wrench (Nut)—11/16"



1/2" Bolt or Nut
Wrench—3/4"

